

Model 286 SVD

286 SVD is a sensor for sensing AC High Voltage for personal safety. It provides electric engineering personnel, power engineering personnel, firefighting personnel and instrument equipment workers with prominent warning when approaching high voltage and for taking necessary safety action, preventing illusion and misjudgment which could lead to electric shock to an individual.

When a person wearing 286 SVD is approaching high voltage source or equipment, the sensor will detect automatically and buzzer will generate a "Bi-Bi" short sound for warning and LED will give flash light to remind operators that the user is approaching a high voltage and special attention shall be given to the safety of operations.

SPECIAL FEATURES :

- Compact, easy to wear and convenient in use.
- Usable both indoor and outdoor.
- Water-proof design.
- Equipped with self-testing functions.
- Sound and flash light warning of different frequencies varied positively with sensed voltages.
- Able to sense all kinds of AC High Voltage System.
- Low power consumption.
- CE Certified.

GENERAL SPECIFICATIONS :

- * **Distance of starting warning** : 80cm for 11.4KV (6.6KV voltage to earth)
- * **Min. Sensing Voltage** : 1.1KV
- * **Applicable Frequency** : 50/60Hz
- * **Volume** : 70dB or higher at 1 meter distance
- * **Operating Temperature & Humidity** : 5°C ~ 45°C / 80% R.H.
- * **Battery life** : 50 hours for continuous use.
- * **Battery** : CR2032
- * **Outside dimensions** : 59(L) x 56(W) x 18(H) mm
- * **Weight** : Approx. 35g.(including Battery)

ACCESSORIES :

Elastic cord, Band, Bracket, Instruction manual & Battery.

METHOD OF USE● **Inspection before use**

- (1) Check the appearance and structure for any abnormality.
- (2) Press Self-Test switch (about 10 seconds) to confirm all functions are working normally.
- (3) To be careful and to avoid misjudgement, test the unit by contacting AC 110V / 230V insulated wire with its front side to see if it sounds and flashes.

● **Wearing**

Wear the unit to the outer side of fore arm with the sensing side faces outwardly, as shown in the figure :

The effect is best when the sensing side is facing high voltage in right angle (90Deg.). When it is worn at the inner side of arm or is covered by cloth, the sensitivity is poorer.

All Specifications are subject to change without prior notice

KUSAM-MECO[®]

G 17, Bharat Industrial Estate, T. J. Road,
Sewree (W), Mumbai - 400 015. INDIA.

Sales Direct : (022) 24156638

Tel. : (022) 24124540, 24181649. **Fax** : (022) 24149659

Email : kusam_meco@vsnl.net

Website : www.kusamelectrical.com
www.kusam-meco.co.in

KUSAM-MECO[®]

**PERSONAL SAFETY
H.V. DETECTOR
MODEL - 286 SVD**

**OPERATION
MANUAL**

**PERSONAL SAFETY
H.V. DETECTOR
MODEL - 286 SVD**

**INTRODUCTION**

286 SVD is a sensor for sensing AC High Voltage. It provides electric engineering personnel, power engineering personnel, firefighting personnel and instrument equipment workers with prominent warning when approaching high voltage and for taking necessary safety action, preventing illusion and misjudgment which could lead to electric shock to person.

When a person wearing 286 SVD is approaching high voltage source or equipment, the sensor will detect automatically and buzzer will generate a beep sound for warning and LED will flash to remind operators that the user is approaching a high voltage source and special attention shall be given to the safety of operations.

FEATURES :

- Compact, easy to wear and convenient in use.
- Usable both indoor and outdoor.
- Water-proof design.
- Equipped with self-testing functions.
- Sound and flash light warning on different frequencies varied positively with sensed voltages.
- Able to sense all kinds of AC High Voltage System.
- Low power consumption.
- Meets : EN61326-1

SPECIFICATION

- **Distance of starting warning** : 80cm for 11.4kV (6.6kV to earth)
- **Applicable frequency** : 50 / 60Hz
- **Volume** : > 65dB at 1 meter distance
- **Operating Temp & Humidity** : 5°C - 45°C
80% R.H. Max.
- **Outside Dimensions** : 59(L) x 56(W) x 18(H)mm
- **Weight** : 35g. (Including battery)
- **Battery to use** : CR2032 x 1
- **Battery life** : Approx. 50 hours for continuous use
- **Accessories** : Elastic cord, Band, Bracket, Instruction Manual & Battery.

METHOD OF USE

1. Inspection before use
 - (1) Check the appearance and structure for any abnormality.
 - (2) Press Self-Test switch (about 10 seconds) to confirm all functions are working normally.
 - (3) To be careful and to avoid misjudgment, test the unit by contacting AC 110V insulated wire with its front side to see if it sounds and flashes.

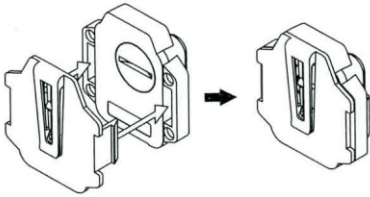
2. Wearing

Wear the unit to the outer side of fore arm with the sensing side facing outwardly, or attach it to hard hat, chest pocket forward, as shown in the following figure :



The effect is best when the sensing side is facing high voltage is right angle (90 Deg.). When it is worn at the inner side of arm or is covered by cloth, the sensitivity is poor.

3. Combination for attachment to chest pocket



CLEANING & REPLACING BATTERY

1. Sensing side should be kept clean. The case may be cleaned with soft fabric and mild detergent. No solvent or corrosive agent may be used.
2. Replacing Battery
 - (1) When the sound becomes weak, the battery shall be replaced.
 - (2) Use coin to open battery cover and remove used battery. Place new battery into slot with the battery positive (+) face up and fasten battery cover with coin.

CAUTIONS

1. This instrument is an auxiliary testing unit and is only for obtaining warnings as additional protection. Never use this instrument as substitution for Tester. Electrical Test shall be the prime electric testing instrument.
2. Other than affected by how you wear, the sensing and warning distance may be influenced by direction of electric article, ambient environment, shielding objects and weather conditions.
3. Buzzer has inner water-proof film. Do not pierce it with sharp article.
4. Do not store this instrument outdoor or inside of car for long time to avoid direct sunbeam and high temperature.
5. The instrument shall not be dropped or impacted heavily. If such situation does happen, perform inspection and self-test to ensure no damage occurred before using again.
6. If the instrument is rinsed by rain, remove battery and place it at cool place for natural dry.

KUSAM-MECO

MUMBAI
TEST CERTIFICATE
PERSONAL SAFETY
H.V. DETECTOR

This Test Certificate warrants that the product has been inspected and tested in accordance with the published specifications.

The instrument has been calibrated by using equipment which has already been calibrated to standards traceable to national standards.

MODEL NO. 286SVD

SERIAL NO. _____

DATE: _____

ISO 9001
REGISTERED



06

KUSAM-MECO

WARRANTY

Each "KUSAM-MECO" product is warranted to be free from defects in material and workmanship under normal use & service. The warranty period is one year (12 months) and begins from the date of despatch of goods. In case any defect occurs in functioning of the instrument, under proper use, within the warranty period, the same will be rectified by us free of charges, provided the to and fro freight charges are borne by you.

This warranty extends only to the original buyer or end-user customer of a "KUSAM-MECO" authorized dealer.

This warranty does not apply for damaged Ic's, fuses, burnt PCB's, disposable batteries, carrying case, test leads, or to any product which in "KUSAM-MECO's" opinion, has been misused, altered, neglected, contaminated or damaged by accident or abnormal conditions of operation or handling.

"KUSAM-MECO" authorized dealer shall extend this warranty on new and unused products to end-user customers only but have no authority to extend a greater or different warranty on behalf of "KUSAM-MECO".

07

KUSAM-MECO

“KUSAM-MECO’s” warranty obligation is limited, at option, free of charge repair, or replacement of a defective product which is returned to a “KUSAM-MECO” authorized service center within the warranty period.

THIS WARRANTY IS BUYER’S SOLE AND EXCLUSIVE REMEDY AND IS IN LIEU OF ALL OTHER WARRANTIES, EXPRESS OR IMPLIED, INCLUDING BUT NOT LIMITED TO ANY IMPLIED WARRANTY OF MERCHANTABILITY OR FITNESS FOR A PARTICULAR PURPOSE. “KUSAM-MECO” SHALL NOT BE LIABLE FOR ANY SPECIAL, INDIRECT, INCIDENTAL OR CONSEQUENTIAL DAMAGES OR LOSSES, INCLUDING LOSS OF DATA, ARISING FROM ANY CAUSE WHATSOEVER.

All transaction are subject to Mumbai Jurisdiction.

KUSAM-MECO[®]

G 17, Bharat Industrial Estate, T. J. Road,
Sewree (W), Mumbai - 400 015. INDIA.

Sales Direct : (022) 24156638

Tel. : (022) 24124540, 24181649. **Fax :** (022) 24149659

Email : kusam_meco@vsnl.net

Website : www.kusamelectrical.com
www.kusam-meco.co.in

08

KUSAM-MECO

09